

2022 Annual Report



March 10, 2023

2022 Annual Report

- Required by the Pinelands Protection Act and Executive Order.
- Highlights the Commission's work during the 2022 calendar year.

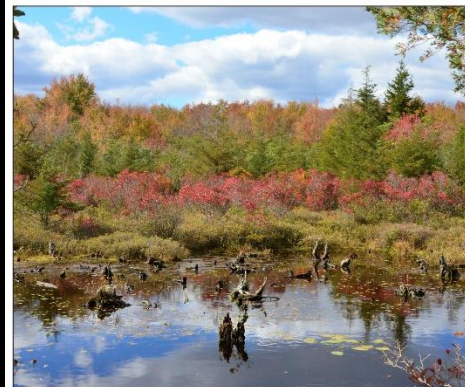
Scenes around the Pinelands in 2022



Above: New Jersey is among the top growers of blueberries in the U.S., with most of the production occurring in the Pinelands. The NJ Division of Travel & Tourism featured this photo on Instagram.



Above: Native pink lady's slipper orchids can be seen blooming in the Pinelands from early to mid-May. They are among approximately 27 wild orchid species in the Pinelands.



Above: Hikers can see brilliant fall foliage in Double Trouble State Park in the Pinelands. Located in Ocean County, the park is over 8,000 acres and offers more than eight miles of official, blazed trails.



Above: Great blue herons are a common but beautiful sight along Wildlife Drive at the Edwin B. Forsythe National Wildlife Refuge in the Pinelands National Reserve.

**Photos by Paul Leakan
NJ Pinelands Commission**

2022 Planning Activities

The Commission's new stormwater rules took effect in 2022.

Much of 2022 was spent preparing for implementation of the rules by drafting model ordinances for the 53 Pinelands municipalities and advising applicants to prepare for the date (January 18, 2023) on which the rules will be applied to all public and private development applications.

Meanwhile, the Commission proposed amendments to the Comprehensive Management Plan (CMP) that would strengthen protections of the Kirkwood-Cohansey aquifer system.



2022 Annual Report
New Jersey Pinelands Commission

2022 Planning Activities

Climate resilience:

In 2022, the Commission launched a new Climate Change webpage that charts the work of the Commission's Climate Committee and contains information about other climate resiliency initiatives.

The Climate Committee met five times in 2022, and staff and Committee members discussed a series of potential CMP amendments pertaining to climate change.

The Commission also participated in the Interagency Council on Climate Resilience in 2022.



2022 Planning Activities

Climate resilience, cont.

In June 2022, Commission installed a 340-square-foot rain garden at its headquarters in Pemberton Township. The garden is designed to collect, treat and infiltrate an estimated 53,287 gallons of stormwater onsite each year.

The Commission obtained a free energy audit of its four buildings through New Jersey's Clean Energy Program.

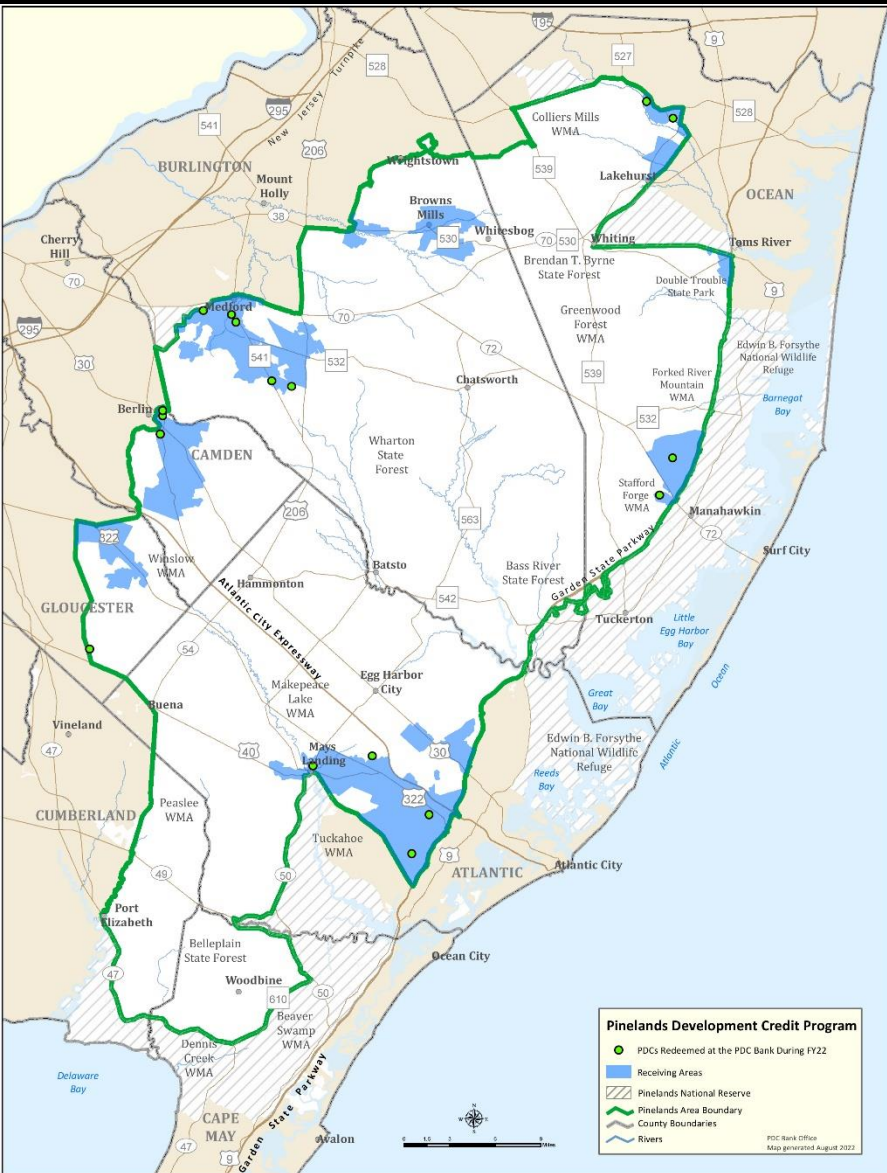


2022 Planning Activities

- In 2022, the Commission completed a significant project funded by its annual grant from the National Park Service: excavation of the former Brotherton Indian Reservation (1758-1802) that once encompassed portions of present-day Indian Mills, Shamong Township.
- The Commission also created a new permanent land protection database and received and reviewed 137 municipal master plan and ordinance amendments in 2022.



Pinelands Development Credit Program 2022 Activity



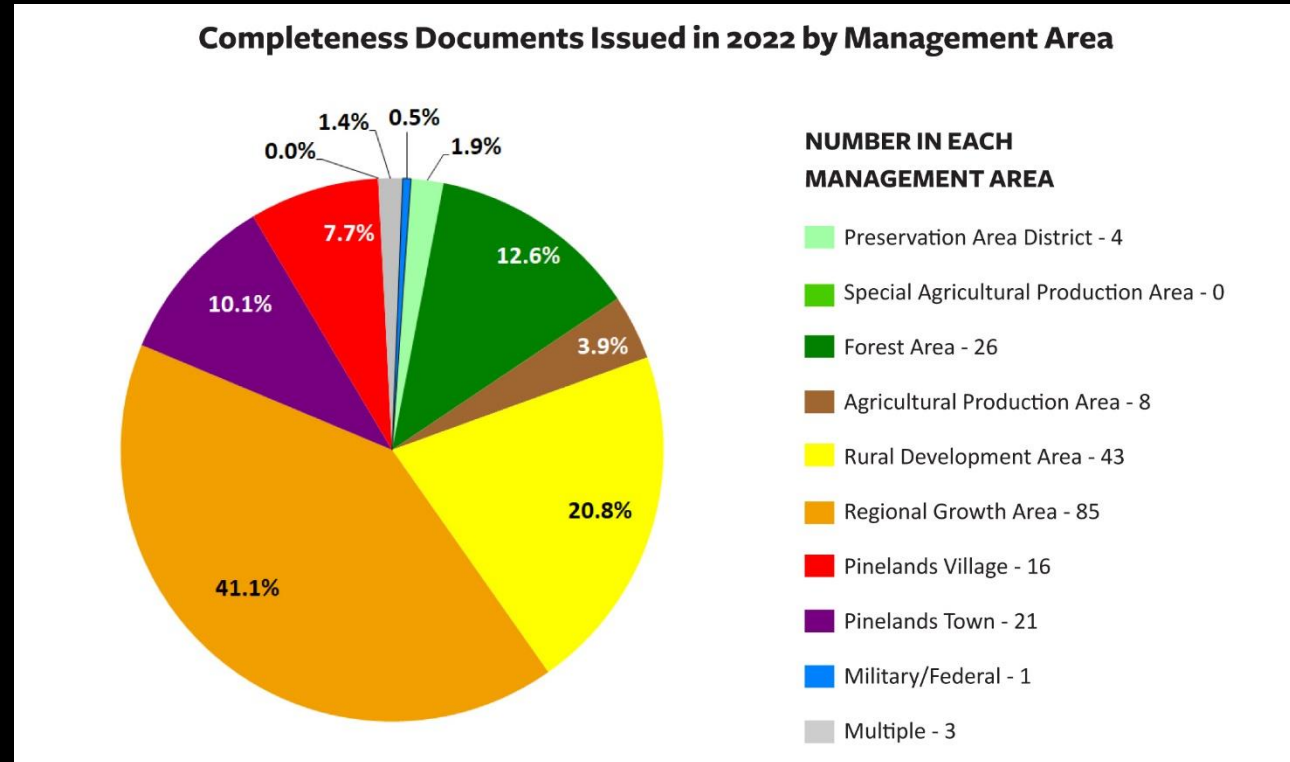
- During 2022, 15.19 PDCs were allocated by the Commission to 14 sending area properties. A total of 16.25 PDCs were severed, protecting 365.39 acres.
- In 2022, a total of 44.50 PDCs were sold, with an average sales price of \$75,371 per PDC.

A total of 9.25 PDCs were redeemed for 14 residential projects and three non-residential projects in Barnegat, Berlin, Egg Harbor, Galloway, Hamilton, Lacey, Medford, Monroe, Shamong, Stafford, Weymouth and Winslow townships in 2022.

2022 Regulatory Activities

A total of 207 Completeness Documents were issued in 2022, including Certificates of Filing, Preliminary Zoning Permits and Notices of Filing.

Most Completeness Documents (85) were for proposed development in Regional Growth Areas.



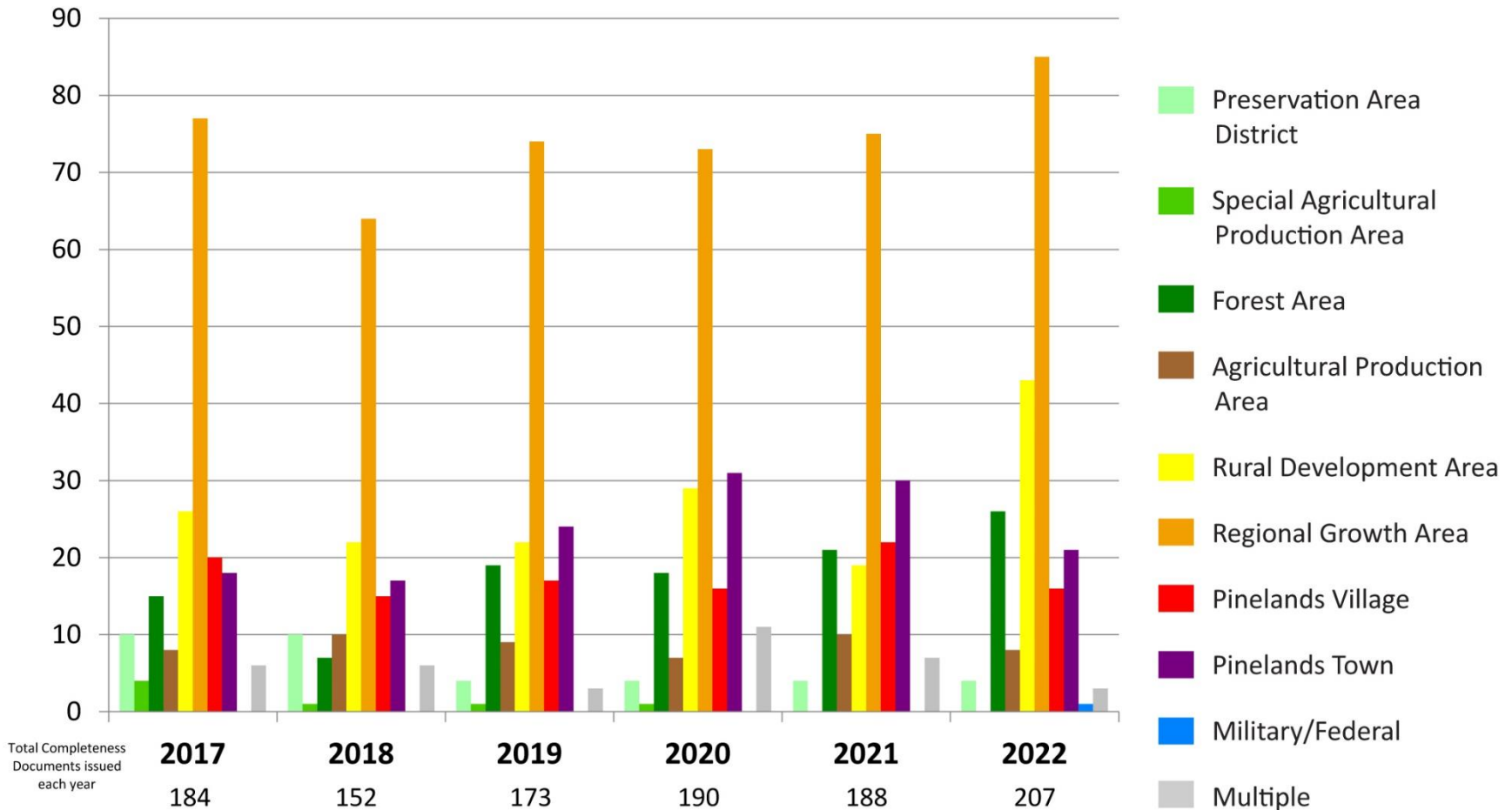
2022 Regulatory Activities

Completeness Documents Issued in 2022 by Management Area and Type of Development

<i>Management Areas</i>	Commercial	Infrastructure	Institutional	Recreation	Residential	Resource Extraction	Total
Preservation Area District	1	1			1	1	4
Special Agricultural Production Area							0
Forest Area	3	2			15	6	26
Agricultural Production Area	2				6		8
Rural Development Area	11	2			29	1	43
Regional Growth Area	22	2	2		59		85
Pinelands Village	4				12		16
Pinelands Town	9				12		21
Military/Federal	1						1
Multiple	2	1					3
Totals	55	8	2	0	134	8	207

2022 Regulatory Activities

Completeness Documents by Management Area (2017-2022)



2022 Regulatory Activities



- The Commission approved a total of 32 applications for public development and four waivers of strict compliance.
- It also issued nine Recreation Permits for organized, off-road vehicle events in the Pinelands Area.

Above: The Pinelands Commission approved a public development application to install a geothermal well field for the heating and cooling of the historic Batsto Mansion.

2022 Science & Research Activities



The Commission advanced numerous research projects, including work on:

Snake Fungal Disease

Rare Snake Population Monitoring

Microorganism Study

Endocrine Disruption Study

Joint Corn Snake Radio Tracking and Drift Fence Study

Eastern Kingsnake Study

Ground Skink eDNA Study

Eastern Box Turtle Study

Long-term Environmental Monitoring (surveys of frogs and toads and water quality and water levels)



Public Information, Education & Outreach 2022 Activity

Responded to more than 600 public inquiries;

Organized and carried out the spring and summer editions of the Pinelands Short Course, spring and fall editions of the annual, Pinelands-themed World Water Monitoring Challenge events, and the annual Pinelands Orientation for Newly Elected Officials;

Organized, hosted and recorded 10 educational webinar presentations;

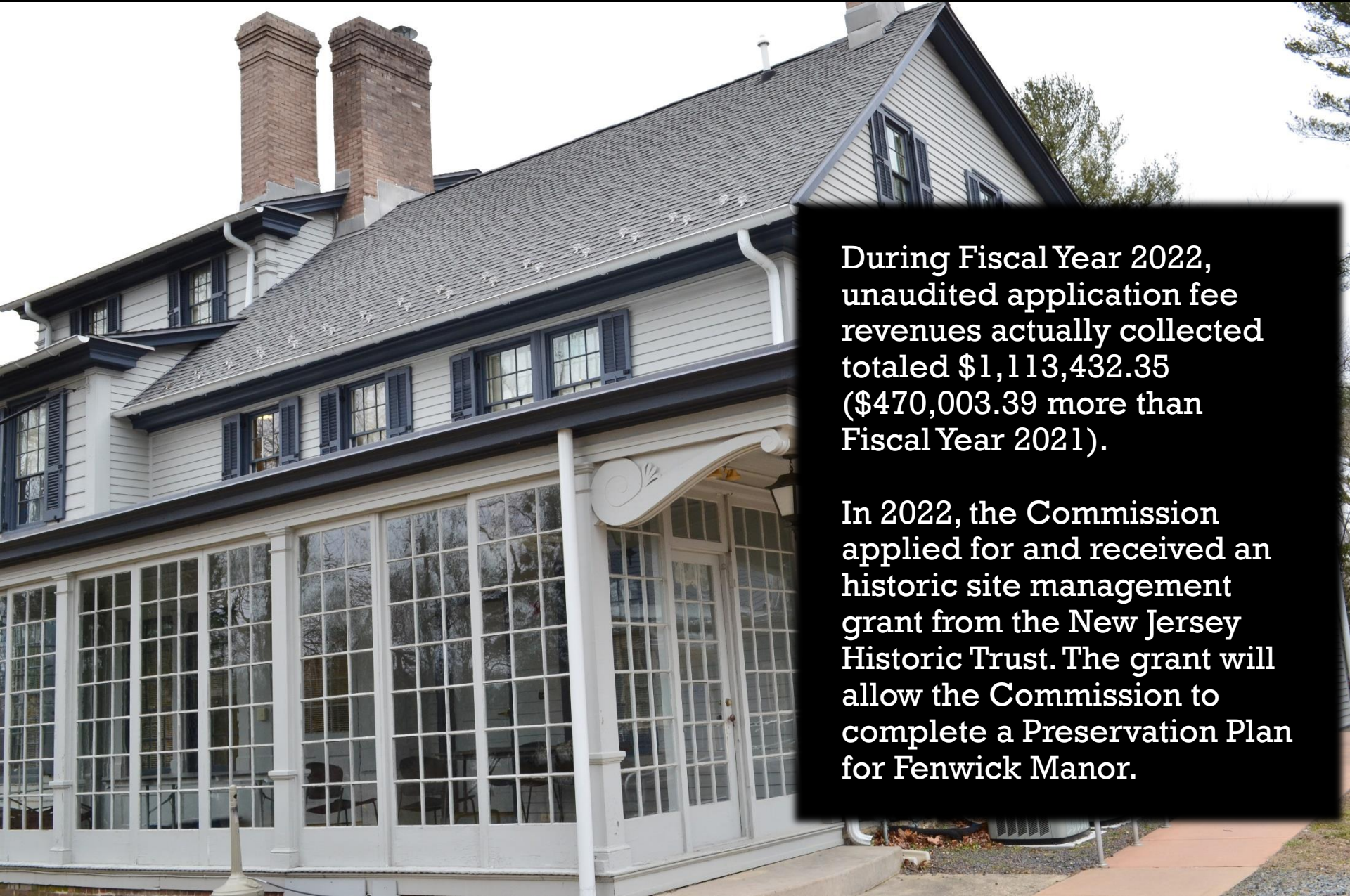
Organized and held the Commission's first-ever Moth Night and second Archaeology and Anthropology Symposium;

Maintained and enhanced the Commission's website, creating two new webpages; and

Took and shared 928 photos on Instagram, 375 Tweets on Twitter and 16 videos on YouTube.



2022 Finances



During Fiscal Year 2022, unaudited application fee revenues actually collected totaled \$1,113,432.35 (\$470,003.39 more than Fiscal Year 2021).

In 2022, the Commission applied for and received an historic site management grant from the New Jersey Historic Trust. The grant will allow the Commission to complete a Preservation Plan for Fenwick Manor.



Questions?